

LEGEND

Site Boundary

FIGURE 1.
SITE VICINITY
INTERSTATE SOLAR ENERGY CENTER
ST. LUCIE COUNTY, FL

Sources: USGS, 2016; ECT, 2016.



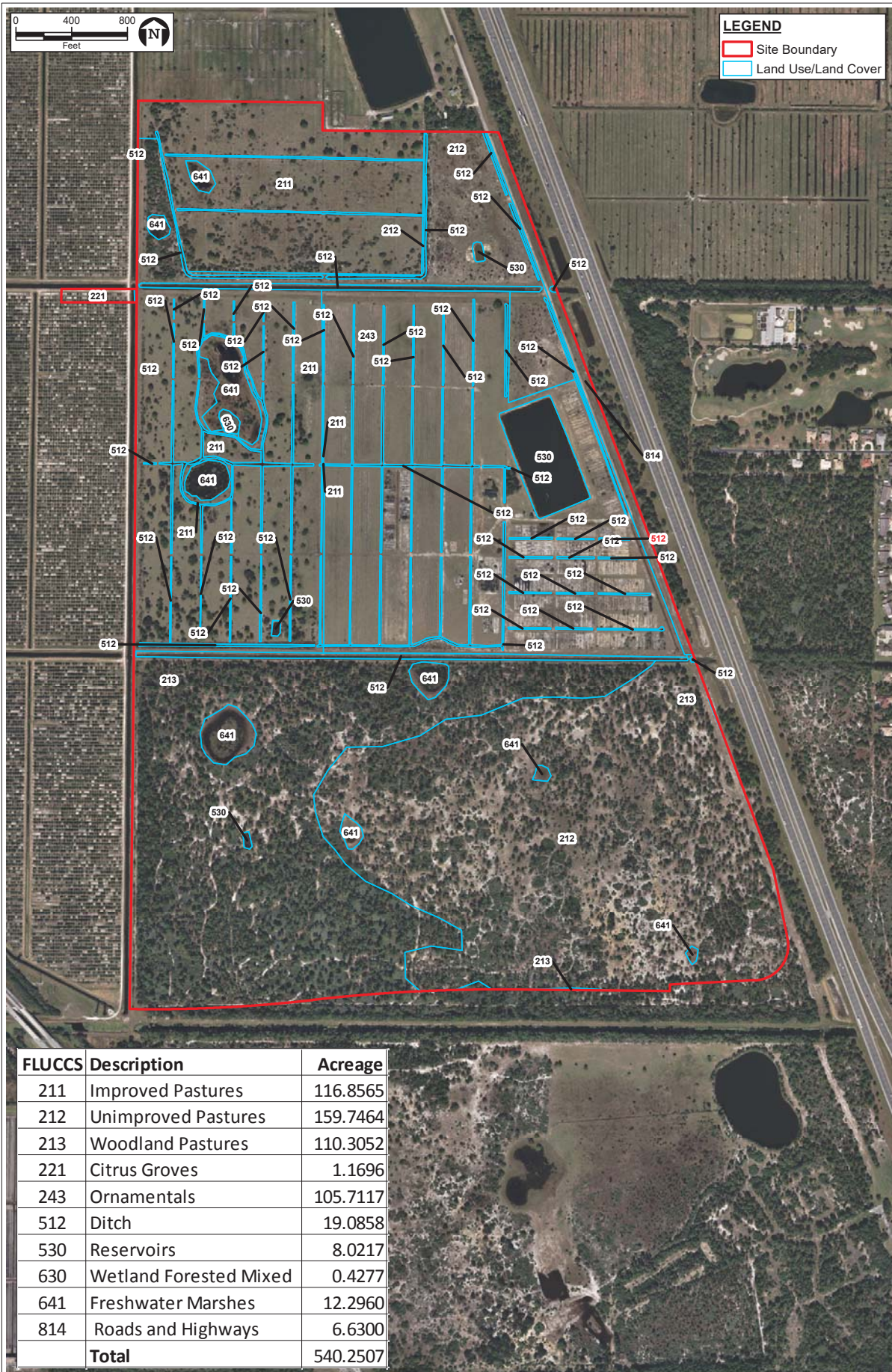


FIGURE 4.
 EXISTING LAND USE / LAND COVER
 INTERSTATE SOLAR ENERGY CENTER
 ST. LUCIE COUNTY, FLORIDA

Sources: SFWMD, 2016; FDOT, 2016; ECT, 2017.





FIGURE 5.
 EXISTING FNAI LAND COVER
 INTERSTATE SOLAR ENERGY CENTER
 ST. LUCIE COUNTY, FLORIDA

Sources: FWC, 2017, FDOT, 2016, ECT, 2017.

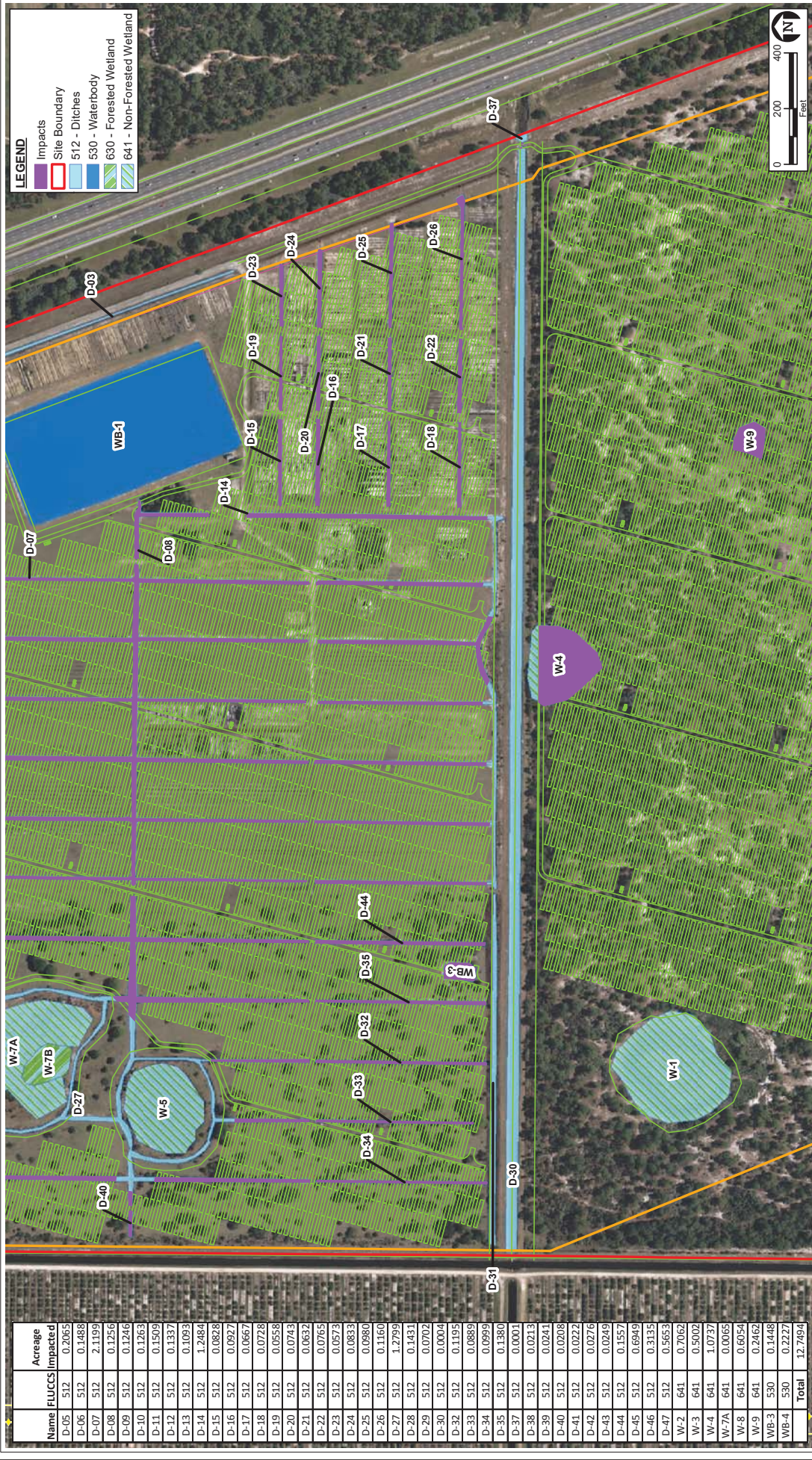


Name	FLUCCS	Acreage Impacted
D-05	512	0.2065
D-06	512	0.1488
D-07	512	2.1199
D-08	512	0.1256
D-09	512	0.1246
D-10	512	0.1263
D-11	512	0.1509
D-12	512	0.1337
D-13	512	0.1093
D-14	512	1.2488
D-15	512	0.0828
D-16	512	0.0927
D-17	512	0.0667
D-18	512	0.0728
D-19	512	0.0558
D-20	512	0.0743
D-21	512	0.0632
D-22	512	0.0765
D-23	512	0.0573
D-24	512	0.0833
D-25	512	0.0980
D-26	512	0.1160
D-27	512	1.2799
D-28	512	0.1431
D-29	512	0.0702
D-30	512	0.0004
D-32	512	0.1195
D-33	512	0.0889
D-34	512	0.0999
D-35	512	0.1380
D-37	512	0.0001
D-38	512	0.0213
D-39	512	0.0241
D-40	512	0.0208
D-41	512	0.0222
D-42	512	0.0276
D-43	512	0.0249
D-44	512	0.1557
D-45	512	0.6949
D-46	512	0.3135
D-47	512	0.5653
WB-2	641	0.7062
WB-3	641	0.5002
WB-4	641	1.0737
WB-7A	641	0.0065
WB-8	641	0.6054
WB-9	641	0.2462
WB-3	530	0.1448
WB-4	530	0.2227
Total		12.7494



FIGURE 8. MAP 1 OF 3
WETLANDS AND WATERBODY IMPACTS
INTERSTATE SOLAR ENERGY CENTER
ST. LUCIE COUNTY, FLORIDA

Sources: SFWMD, 2016; FDOT, 2016; ECT, 2017.

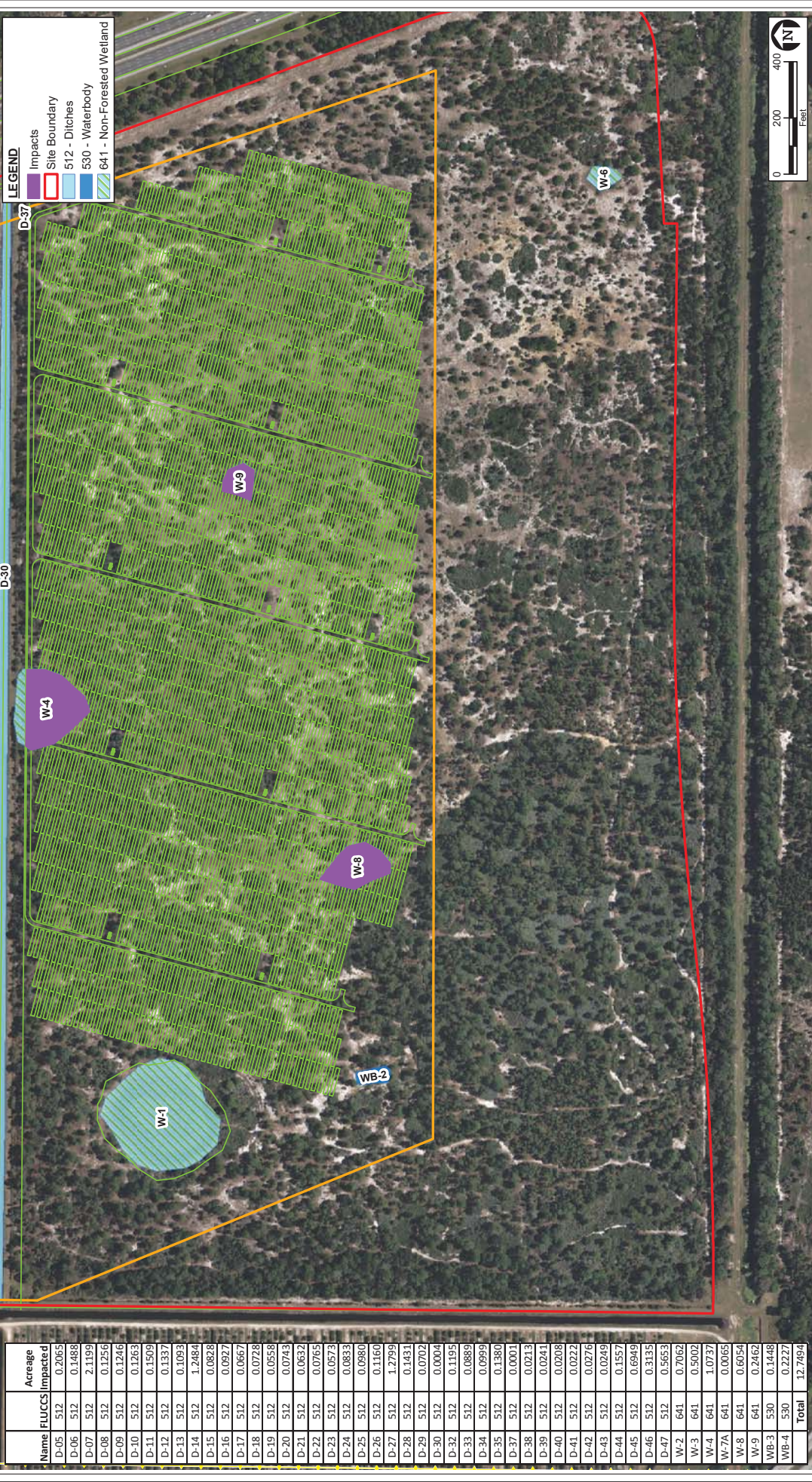


Name	FLUCCS	Acreage Impacted
D-05	512	0.2065
D-06	512	0.1488
D-07	512	2.1199
D-08	512	0.1256
D-09	512	0.1246
D-10	512	0.1263
D-11	512	0.1509
D-12	512	0.1337
D-13	512	0.1093
D-14	512	1.2484
D-15	512	0.0828
D-16	512	0.0927
D-17	512	0.0667
D-18	512	0.0728
D-19	512	0.0558
D-20	512	0.0743
D-21	512	0.0632
D-22	512	0.0765
D-23	512	0.0573
D-24	512	0.0833
D-25	512	0.0980
D-26	512	0.1160
D-27	512	1.2799
D-28	512	0.1431
D-29	512	0.0702
D-30	512	0.0004
D-32	512	0.1195
D-33	512	0.0889
D-34	512	0.0999
D-35	512	0.1380
D-37	512	0.0001
D-38	512	0.0213
D-39	512	0.0241
D-40	512	0.0206
D-41	512	0.0222
D-42	512	0.0276
D-43	512	0.0249
D-44	512	0.1557
D-45	512	0.6949
D-46	512	0.3135
D-47	512	0.5653
W-2	641	0.7062
W-3	641	0.5002
W-4	641	1.0737
W-7A	641	0.0065
W-8	641	0.6054
W-9	641	0.2462
WB-3	530	0.1448
WB-4	530	0.2227
Total		12.7494

FIGURE 8. MAP 2 OF 3
WETLANDS AND WATERBODY IMPACTS
INTERSTATE SOLAR ENERGY CENTER
ST. LUCIE COUNTY, FLORIDA

Sources: SFWMD, 2016; FDOT, 2016; ECT, 2017.





Name	FLUCCS	Acreage Impacted
D-05	512	0.2065
D-06	512	0.1488
D-07	512	2.1199
D-08	512	0.1256
D-09	512	0.1246
D-10	512	0.1263
D-11	512	0.1509
D-12	512	0.1337
D-13	512	0.1093
D-14	512	1.2484
D-15	512	0.0828
D-16	512	0.0927
D-17	512	0.0667
D-18	512	0.0728
D-19	512	0.0558
D-20	512	0.0743
D-21	512	0.0632
D-22	512	0.0765
D-23	512	0.0573
D-24	512	0.0833
D-25	512	0.0980
D-26	512	0.1160
D-27	512	1.2799
D-28	512	0.1431
D-29	512	0.0702
D-30	512	0.0004
D-32	512	0.1195
D-33	512	0.0889
D-34	512	0.0999
D-35	512	0.1380
D-37	512	0.0001
D-38	512	0.0213
D-39	512	0.0241
D-40	512	0.0206
D-41	512	0.0222
D-42	512	0.0276
D-43	512	0.0249
D-44	512	0.1357
D-45	512	0.6949
D-46	512	0.3135
D-47	512	0.5653
W-2	641	0.7062
W-3	641	0.5002
W-4	641	1.0737
W-7A	641	0.0065
W-8	641	0.6054
W-9	641	0.2462
WB-3	530	0.1448
WB-4	530	0.2227
Total		12.7494

FIGURE 8. MAP 3 OF 3
WETLANDS AND WATERBODY IMPACTS
INTERSTATE SOLAR ENERGY CENTER
ST. LUCIE COUNTY, FLORIDA

Sources: SFWMD, 2016; FDOT, 2016; ECT, 2017.





FIGURE 9.
 PROPOSED FACILITY LAYOUT
 INTERSTATE SOLAR ENERGY CENTER
 ST. LUCIE COUNTY, FLORIDA

Sources: ECT, 2017.